



RESIDENTIAL • MULTI FAMILY  
CONDOS • SINGLE FAMILIES

Jeff@jeffreybowen.com  
781-201-9488



# CHELSEA RECORD

YOUR HOMETOWN NEWSPAPER SINCE 1890

VOLUME 132, No. 20

THURSDAY, MAY 30, 2024

35 CENTS

## MEMORIAL DAY IN CHELSEA 2024



Memorial Day ceremony was held Monday morning in front of City Hall. More than 100 residents and officials attended the event. In the top photo are Councillor Manuel Tesche, Councillor Leo Robinson, Councillor Todd Taylor, Councillor Giovanni Recuperio, Councillor Calvin T. Brown, Gold Star Mother Becky Swope; Honored Guest State Senator Lydia Edwards, Norieliz De Jesus, President Chelsea City Council, Superintendent of Chelsea Public Schools Dr. Almi Abeyta and Chelsea City Manager Fidel Maltez. In

the photo below left is the Chelsea Police Honor Guard. In the photo below right are Gold Star Mother Diana Ramirez (second from right) with (from left) Marc Silvestri of the Chelsea Veterans Home, Christine Baldini of the Soldiers Home, and Revere City Councillor Juan Pablo Jaramillo.



## Chelsea Soldiers' Home shelter hits one month of operation

By Adam Swift

Operations at the temporary emergency assistance shelter at the old Chelsea Soldiers' Home hospital building are in full swing.

Earlier this spring, state officials announced that the empty building would be used as an emergency shelter for six to 12 months as the state faces an influx of migrants, many from Haiti.

The shelter is currently at its capacity of 100 families, or about 300 people, according to Alex Train, the Chief Operating Officer for La Colaborativa, the local human services nonprofit overseeing operations and services at the shelter.

"We're working with all the families presently on what we see as immediate stabilization — ac-

cess to basic necessities, healthcare, immigration assistance — as well as dovetailing into intensive case management for all of them," said Train. "The case management component focuses on helping families exit the shelter faster. It's a combination of workforce training, ESOL classes, digital literacy, as well as financial counseling and housing assistance."

Train said La Colaborativa does anticipate that as people progress through the program and gain employment and housing, there will be new families moving in for the duration of the project.

"From our vantage point, it's been going remarkably well," said Train. "We've been able to hire over 95 new em-

See SHELTER Page 2

## Planning Board approves site plan for Wesley Street Church

By Adam Swift

The site plan for the Ministerio Internacional Cristo Vive Church at 10 Wesley Street was approved by the Planning Board at its meeting on Tuesday night.

The Zoning Board of Appeals previously approved a special permit for parking issues at the main site of the church, as well as for an adjacent property it owns at 19 Clyde St. in April.

Three years ago, the church was approved for a major site plan, but there was an issue with parking, so the church purchased 19 Clyde St., which abuts the property, and restructured the parking."

Between the two prop-

erties, church legal counsel Thomas Curran said there are now enough spaces to satisfy parking requirements.

The existing residential building at 19 Clyde St. will remain on the property and be used by visiting pastors and other church uses, Curran added.

The main entrance and exit for the church will remain on Wesley Street.

At Tuesday night's planning board meeting, Curran presented updated lighting and landscaping plans to the board.

"The lighting plan has been modified from the original plan to minimize any effect on the neighbors," said Curran.

See CHURCH Page 2

## Planning Board takes up Flatiron battery energy storage project

By Adam Swift

Representatives from Flatiron Energy presented an overview of their plans for the construction of a battery energy storage structure at 284 Eastern Ave. during Tuesday night's planning board meeting.

The project will require a major site plan review from the planning board, as well as a number of special permit and variance recommendations, including a special permit for a major commercial project.

"Flatiron Energy is an energy developer, owner, and operator, so we plan

on owning and operating the energy storage systems that we develop," said Flatiron co-founder and partner Jonathan Poor.

The company has offices in Boston, New York City, and Boulder, Colorado and is currently developing energy storage systems in the Greater Boston, Connecticut, and New York City areas.

"We develop energy storage projects ... in areas that we believe have an opportunity for improvement and that we think are underutilized spaces," said Poor. "A number of our projects are in industrial areas or at old power plants."

Poor said one of the main goals of the battery energy storage structures is to benefit the environment as well as improve the reliability and resilience of local electrical systems.

Over the past year, Poor said Flatiron has been working and meeting with city officials and local or-

ganizations to explain the project and get feedback.

Flatiron is working with the city and community organizations on both payment in lieu of taxes (PILOT) and community host agreements.

Poor said the community host agreement will

focus on providing workforce development and training for local residents in electrical skills, HVAC, and other technical areas.

"It is going to be a while before we get into

See FLATIRON Page 4

## CHELSEA HIGH SCHOOL'S SENIOR PROM



The seniors of Chelsea High School showed up at the Danversport Yacht Club in high fashion last Saturday evening for their senior prom. See Page 6 for more photos.

**INDEPENDENT**  
Newspaper Group

www.chelsearecord.com



### Chelsea Firefighters memorial postponed

The annual Chelsea Firefighters memorial will be postponed until September 8, 2024 at 10 a.m. The reason is due to the remodel and construction of the Emergency Communications (911) building. On September 8 we will honor our fallen brothers from the year past as well as have the unveiling of the new memorial.



By Tracy Nowicki  
Director of Elder Services

### When Is It Time To Stop Driving? :

Driving is more than just a method of transportation, it represents independence, freedom, and the ability to connect with the world. For many seniors, their car keys are a symbol of autonomy. However, there comes a time when concerns about safety, both for our senior and for others on the road, must take precedence.

The decision to revoke a driver's license comes with emotional and practical challenges. It's a topic that stirs up feelings of loss, fear, and frustration. As we delve into this delicate issue, it's important to approach it with empathy, respect, and a focus on preserving the dignity of our loved ones.

Recognizing when it's time for our senior to stop driving involves paying attention to certain signs. These may include frequent minor accidents, trouble with basic driving maneuvers, difficulty seeing road signs, or confusion while driving in familiar areas. Additionally, medical conditions such as dementia, Parkinson's disease, or vision impairments can significantly impact driving abilities.

It's crucial for family members and caregivers to observe and document these signs. However, this

## Vintage Vibes

process should never feel like surveillance but rather a caring concern for our senior's well-being and the safety of others.

For seniors, the prospect of losing their driving privileges can evoke a profound sense of loss. It can feel as though a part of their identity is being taken away. They might worry about becoming a burden to their families or losing touch with their social circles. These are legitimate concerns that need to be addressed with compassion.

When initiating the conversation, it's important to choose the right time and setting. A calm, private environment is ideal. Begin by expressing your love and concern. Use "I" statements to share your observations and feelings. For example, "I've noticed that you've had a few close calls while driving, and I'm really worried about your safety."

Rather than simply presenting the problem, come prepared with solutions. Explore alternative transportation options together. Many communities offer senior transportation services, ride-sharing apps like Uber and Lyft can be a convenient option, and family members can organize a schedule for driving duties.

For seniors in the Chelsea area, Chelsea Elder Services offers a senior shuttle program that can assist with transportation needs. Additionally, Mystic Valley Elder Services can provide information and support for alternative transportation options. These services can be reached by contacting Chelsea Elder Services directly or visiting their website. Mystic Valley Elder Services can also be contacted for

assistance with finding suitable transportation alternatives.

Additionally, consider the emotional and social needs of our senior. Encourage participation in community activities that don't require driving. Volunteer to drive them to social events, or arrange for friends to carpool. Helping them stay connected can mitigate the feelings of isolation that often accompany the loss of driving independence.

Consulting with medical professionals can provide an objective perspective. Physicians can assess whether it's safe for our senior to continue driving and offer medical advice that supports the decision. In some cases, a formal driving assessment might be necessary.

It's also wise to understand the legal implications. Each state has its own regulations regarding driver's license renewal and revocation for seniors. Familiarize yourself with these laws to ensure that the process is handled correctly and respectfully.

The goal is to ensure safety while preserving our senior's dignity. Emphasize that this decision is about their well-being and the well-being of others. Reassure them that their independence isn't being taken away, but rather, it's about finding new ways to maintain their independence safely. By working together to find alternative solutions and ensuring ongoing social connections, we can help our loved ones adapt to this new chapter of their lives with dignity and grace.

Feel free to contact us at [Tnowicki@chelseama.gov](mailto:Tnowicki@chelseama.gov) or 617-466-4377.

# Lithium-ion battery fire injures five in Chelsea

A lithium-ion battery from an electric scooter exploded in a Chelsea apartment this weekend, causing a fire that injured five people, Chelsea Fire Chief John Quatieri and State Fire Marshal Jon M. Davine said today.

"Lithium-ion batteries power many of the devices we use every day," said Chief Quatieri. "It's important to use, charge, and store them according to the manufacturer's instructions. Always use the original charging equipment, disconnect it when the device is fully charged, and protect it from damage or abuse. If you use an e-bike or electric scooter, store it outside if possible. If you must store it indoors, keep it clear of doors, windows, and other escape routes."

The Chelsea Fire Department responded to 32 Carmel St. following reports of a fire at about 12:40 am on May 25. On

arrival, firefighters observed smoke and flames on the first floor in the rear of the building. They made entry and quickly knocked down the fire before it spread further. All occupants of the three-story, four-unit dwelling escaped, but four were transported for treatment of injuries that were not life-threatening.

The origin and cause of the fire were investigated by the Chelsea Fire Department and State Police fire investigators assigned to the State Fire Marshal's office. Based on an examination of the scene and witness interviews, they determined that a lithium-ion battery intended for an electric scooter had been left charging for several hours, caught fire, and exploded.

"The high energy density of lithium-ion batteries means they pack a lot of power into a small

device," said State Fire Marshal Davine. "Overcharging, overheating, and physical damage can cause them to fail rapidly and violently, like this one did. Fortunately, the residents were awake and aware of the danger. A few hours later and this could have been a very different story."

When choosing devices powered by lithium-ion batteries, fire officials and safety experts recommend selecting products that are listed by a nationally recognized testing laboratory like UL or Intertek/ETL. Stop using the device right away if you observe swelling or punctures, hear hissing or popping sounds, or notice that it's giving off unusual heat or odor.

For more information on lithium-ion battery safety, visit the Department of Fire Services' website or Take C.H.A.R.G.E. of Battery Safety.

## Shelter // CONTINUED FROM PAGE 1

employees, including over 75 Chelsea residents to work in the shelter with living wage conditions with good benefits and stable income. Moreover, we've been able to employ a model of intensive case management and wraparound services at the shelter, which is really the first time this type of model has been used in the state's overflow sites."

Train said La Colaborativa is continuing to work with the state on issues

such as access to health-care as well as access to various forms of immigration assistance.

"Overall, everyone is situated now and the families seem to be doing really well," said Train.

City Manager Fidel Maltez said he has heard no bad news or complaints, either from residents or the city's public safety team about the shelter operation at the soldiers' home.

"Our public safety team

has visited the facility just about once a week to check in, and we have not found any issues at all with the facility, with the way it is being operated, or with the residents there," said Maltez. "I have been extremely pleased with how well managed it is. I have spoken to the staff at the governor's office, and they are equally pleased, and I think things are going extremely well."

## Church // CONTINUED FROM PAGE 1

All the lighting will face inward toward the property on Wesley Street and away from the neighboring property at 15 Clyde Street.

"We've also provided for fencing along the property lines to avoid adverse lighting effects on Revere Beach Parkway and the property at 15 Clyde," said Curran.

The six-foot high wooden fence will replace the chain link fence on the property, he added.

In addition, there will

be additional plantings along the sidewalks and on the property as part of the landscaping plan, Curran said.

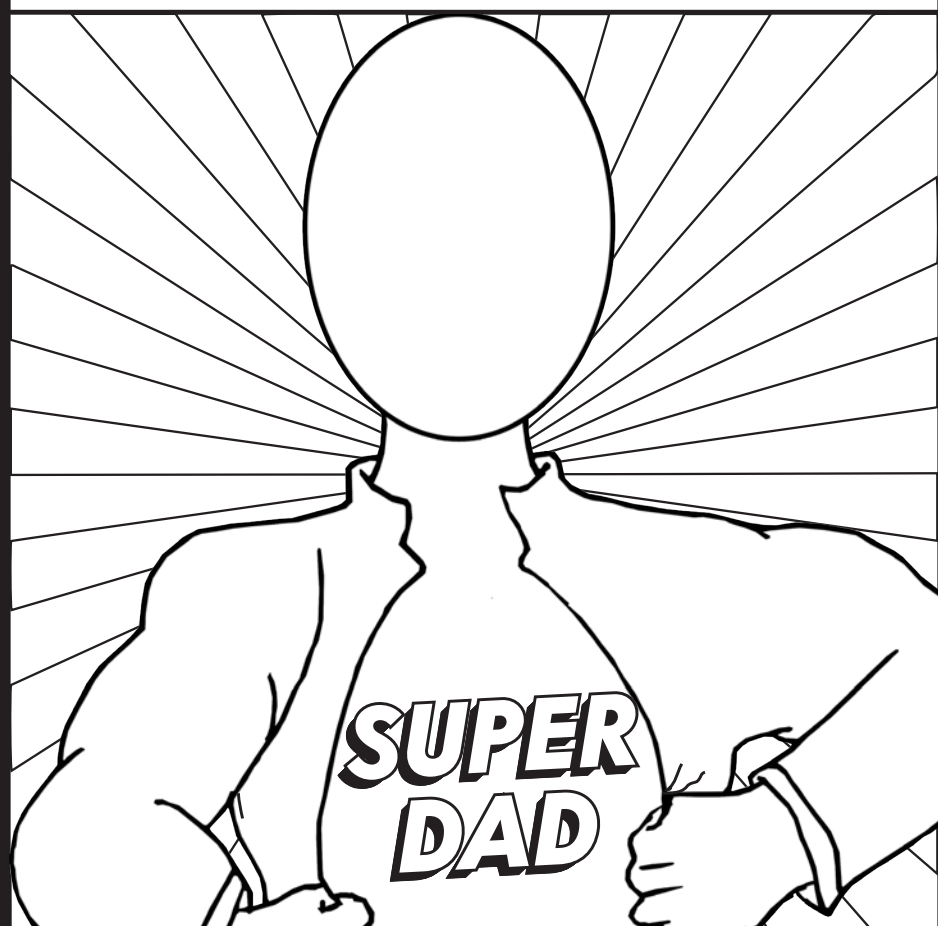
Planning Board member Mimi Rancatore said she was concerned that the wooden fence would be susceptible to graffiti tagging and would have to be repainted on a regular basis.

As part of the conditions approved by the planning board, there will be a design review of the fencing that is installed

along the visible portion of the property along Revere Beach Parkway.

Church Pastor Jose Sanchez has previously said his vision for the church is based on the time he has spent in the United States, as well as the help he received from people during a two-year battle with cancer and his desire to help others. He said there will be a large focus on helping young people and immigrants in the community.

## NOT ALL HEROES WEAR CAPES FATHER'S DAY COLORING PAGE



This is my Dad - Dad's name \_\_\_\_\_

Drawn By - Your name \_\_\_\_\_

City \_\_\_\_\_

## DRAW YOUR DAD

- Complete the picture by creating a picture of your father!
  - PENS & MARKERS WORK BEST, use BOLD COLORS
- Please e-mail to: [PROMO@REVEREJOURNAL.COM](mailto:PROMO@REVEREJOURNAL.COM)

Deadline for entries will be Friday, June 7th.

Entries will be published in the June 12th, & 13th issues of the Revere Journal, Chelsea Record, Everett Independent, East Boston Times, Winthrop Sun Transcript, and The Lynn Journal

## HOME SERVICES 2024

Now is the time to get your service in the eyes of thousands of readers in Print & Online

GET 6 MONTHS OF  
EYES ON YOUR AD

ONLY  
\$175\*

CHOOSE FROM 5  
COMMUNITIES TO  
ADVERTISE IN!

2.19-BY-1-INCHES  
BLACK-AND-WHITE

\*Per Paper. Must be paid in advance.

Buy 4, Get the 5<sup>th</sup> Free!

REVERE JOURNAL

YOUR HOMETOWN NEWSPAPER SINCE 1881

Everett Independent

YOUR HOMETOWN NEWSPAPER SINCE 1890

CHELSEA RECORD

East Boston

TIMES-FREE PRESS

WINTHROP

SUN TRANSCRIPT

Call (781) 485-0588 or email your advertising rep to get started

## NEWS IN BRIEF

### BROADWAY CONSTRUCTION

Downtown Broadway Construction starts on June 3

The Downtown Broadway Project starts on June 3. The project's first phase will improve utilities throughout the Broadway corridor from City Hall Avenue to Williams Street and a portion of Washington Avenue from City Hall Avenue to Bellingham Square.

Construction hours will be Monday through Friday from 7 a.m. to 3:30

p.m.

Residents and business owners can find all traffic and parking information on the City's Traffic Advisory page. Additionally, this information is updated in live time on City's Traffic Advisory social media accounts.

Residents can sign up to get construction notifications by emailing [construction@chelseama.gov](mailto:construction@chelseama.gov)

For more information, residents can visit [chelseama.gov/downtown-broadway](http://chelseama.gov/downtown-broadway) or contact Chelsea:311 (617-466-4209 from outside Chelsea).

## CHS Roundup

### CHACON-ARACENA IS 2ND IN SHOT-PUT, JOSEPH-SEALE 6RH, RAMIREZ-VILLATA 7TH

a sprint of 12.97; and 14th in the 200 dash in 26.7.

### CHS BASEBALL EARNS 14-6 WIN ON SENIOR DAY

The Chelsea High baseball team celebrated Senior Day in appropriate fashion with a 14-6 triumph over Neighborhood House Charter School.

Senior Nash Aquino started the game and went two innings, yielding six hits, striking out four, and walking three. Jeanluis Soto came on in relief and earned the win for coach Mike Lush's squad, going four innings and allowing just one hit while fanning 11 enemy batters and walking two.

Leading the way at the plate for the Red Devils were Leudy Sanchez, who drove in four runs on three hits; Xavier Santiago, who had an RBI and two hits; Elijah Rivera, who drove in two runs on a ground-rule double; and Soto, who drove in two runs on a hit and a walk.

### BOYS VOLLEYBALL TO HOST GRANBY IN STATE TOURNEY

The Chelsea High boys volleyball team, which compiled a superb 14-4 record this season, will host Granby in the Round of 32 in the upcoming Division 2 state tournament.

Coach Gabriel Morales's Red Devils are the 15th-ranked team in D-2, while Granby is ranked 18th with an 18-2 mark.

A date and time for the match had not been announced as of the Record's press deadline Wednesday afternoon.

The winner likely will travel to 2nd-ranked Agawam.

Ariel Chacon-Aracena brought home a second-place medal in this past week's Division 4 State Meet that was held at Westfield State University.

Ariel's toss of 49'-0" earned him the medal and he now will proceed to this weekend's Meet of Champions, competing against the top shot-putters from all of the five divisions.

Teammate Theo Joseph-Seale also earned a medal at the D-4 Meet, finishing in sixth place with a throw of 46'-9". Theo also competed in the discus, finishing in 10th place with a spin of 125'-10".

On the girls' side, Kiara Ramirez-Villata brought home a seventh place medal in the shot with her throw of 33'-5.5". Kiara also competed in the discus and finished in 11th place with a throw of 87'-10".

Teammate Lamari Davis finished in 16th place in the shot with a toss of 30'-4".

Other Red Devils who competed in the meet included Sherwin Kim in the 400 hurdles (20th place in 1:02.73) and Kevin Romero-Molina in the discus (18th with a throw of 111'-4").

For the girls, Gizelle Rodriguez finished 20th in the javelin with a toss of 76'-4".

Freshman Thania Simon qualified for the state meet in three events. Thania finished in 10th place in the triple jump with a distance of 34'-6.5"; 14th place in the 100 dash with

## FROM THE PHOTO ARCHIVES OF ARNIE JARMAK



Chelsea Record legendary photographer Arnie Jarmak chronicled all aspects of city life in Chelsea for more than a decade from the late 1970s through 1989, from fires to political events to graduations, including portraits of the city's residents, young and old alike. As Arnie noted in an interview a few years ago, he was encouraged by Andrew P. Quigley, the publisher of the Record (which was a daily paper in those days), to capture street scenes of the city's residents "because they'll each buy four or five papers." Thousands of residents had their photos appear in the Record through the lens of Arnie Jarmak during his 10+ year tenure at the Record, including this group of youngsters sitting on a front stoop on a late spring day.

## Thousands participate in Project Bread's annual Walk for Hunger

On Sunday, May 5, more than 4,200 participants joined Project Bread's 56th annual Walk for Hunger. This year, the event aims to bring in \$1.3 million to fight food insecurity statewide. Funds raised will go toward improving food access for all children and families across the Commonwealth.

"Each year, the Walk brings together thousands of people in Massachusetts for a common purpose," said Erin McAleer, Project Bread's CEO. "Every dollar raised and every Walker who participates today makes a huge difference in our year-round work. It's a tangible impact. At last year's Walk, we were focused on making school meals free for all children permanently. This year, that's a reality."

Project Bread's Walk for Hunger, which began in 1969 as the first pledge walk in the nation, celebrates and raises awareness of the nonprofit's year-round efforts to fight hunger. This year's 3-mile route on the Boston Common was accessible for all ages and ability levels. Walkers participated in family-friendly activities, including lawn games, face painting, arts and crafts, and more. Project Bread's Chef Sherry Hughes opened the morning with a Grains & Greens recipe demonstration with WROR 105.7 station hosts Bob & LBF. Live performances by bands What She Said and Bad Bat kept Walkers entertained throughout the morning. Families learned about Project Bread's role in the recently launched Make Hunger History coalition, a first-of-its-kind convening of policymakers, businesses, service providers, and people with lived experience to end hunger in Massachusetts permanently.

"We rely on the funds raised through the Walk for Hunger to make our work possible," says



PHOTO BY JON SACHS PHOTOGRAPHY

Over 4,000 people participated in Project Bread's annual Walk for Hunger.

McAleer. "We've made great strides—but there's still too many people in Massachusetts who aren't sure where their next meal is coming from. We have an ambitious goal of \$1.3 million—and we're still working to reach it. We need the public's support to help us make a difference for the 1 in 5 families with kids who are worrying about putting food on the table."

During the event, Project Bread presented its most distinguished award, the Patrick Hughes Award for Social Justice, to Greg Wilmot, President & CEO of the East Boston Neighborhood Health Center. Wilmot was honored for his leadership of the state's largest community-based primary care provider in Massachusetts, his passion and dedication to the community, and his deep commitment to addressing food insecurity as part of healthcare. The award recognizes an individual with an unyielding commit-

ment to driving meaningful change by addressing the causes of hunger, thus carrying forward the spirit of the event's founder, Patrick Hughes.

"As a longtime participant in this walk, this is a special moment for me. I am honored to carry forward the legacy of Patrick Hughes, a social justice advocate who believed that people united together for a common purpose can inspire change," shared Wilmot, during his remarks on Walk Day. "I am proud of EBNHC's work to address food insecurity and thankful to have innovative partners like Project Bread who share our belief that access to healthy and nutritious food is not only a right, but essential to the health and wellbeing of our patients and our community."

In keeping with the community-spirit of the event, the Walk also provides a platform for other organizations to fund the vital work they do for food

Project Bread launched a joint fundraising program, The Commonwealth, to uplift the work of community-based organizations. This year, 39 nonprofits participated in the program, raising more than \$172,849 and counting.

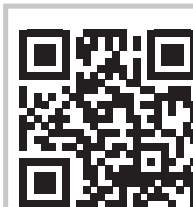
Fundraising will continue through the summer with the goal of raising \$1.3 million. As of now, that goal has not been reached. Visit [www.projectbread.org/walk](http://www.projectbread.org/walk) to donate or start a personal fundraiser to support this mission.

People experiencing food insecurity should call Project Bread's FoodSource Hotline (1-800-645-8333), which provides confidential, free assistance getting connected to a variety of food resources in 180 languages and for the hearing impaired. Counselors can pre-screen families and help them to apply for SNAP. Learn more at [www.projectbread.org/get-help](http://www.projectbread.org/get-help).

## Real Estate Transfers

BUYER 1	SELLER 1	ADDRESS	PRICE
Li, Shuyan	Castillo, Andres	129 Bloomingdale St	\$1,138,000
La Colaborativa Inc	Vasquez, Julio C	50 Heard St	\$1,100,000
Reyes, Juan F	Arsenault, Joseph	56 Cherry St	\$390,000
Velasquez, Edilma N	Lewis Nt	75 Palmer St	\$750,000

For Advertising Rates, Call 781-485-0588



Serving buyers, sellers, and landlords since 2001.



eRealty Advisors Jeff@jeffreybowen.com 781-201-9488

**UPCOMING EVENTS**

A series of summer events presented by the Chelsea Black Community that promote health and wellness through education and healing, interactive workshops, and presentations.

**June 3, 10, and 17**

Preventive Health Education and Behavior in Conquering Chronic Illnesses

Mondays from 5:00 PM – 6:00 PM

**June 5, 12, and 26**

The First Step: Ending Racial and Generational Trauma

Wednesdays from 5:00 PM – 7:00 PM

**Every Friday from June - August**

Music Therapy

Fridays from 6:00 PM – 7:30 PM

**June 19**

Juneteenth Community Celebration

Wednesday from 12:00 PM – 4:00 PM

**June 20 and 27**

Community Storytelling and Art Therapy

Thursdays from 5:00 PM – 7:00 PM

All events except the Juneteenth Celebration will take place at CBC's office, 56 Washington Avenue, Chelsea, MA.

# Chelsea

RECORD

PRESIDENT: Stephen Quigley

EDITOR IN CHIEF: Cary Shuman

## CONGRATULATIONS TO THE CLASS OF 2024

A high school graduation is a singular event in the life of every community, where almost everybody knows one of the graduates or their families. All of us share in the happiness and sense of achievement of our young people who will be receiving their diplomas. And for all of us, a high school graduation brings back our own fond memories from our long-gone youth.

For the graduates themselves, their high school graduation marks both an end and a beginning. They no longer are children, either in the eyes of the law or in reality. They are full-fledged adults who will be leaving the sheltered harbor of their families and communities and setting sail on a journey that none of them will be able to anticipate, but which will be full of surprises, bringing both stormy seas and smooth sailing.

Yes, graduation is a bittersweet time, both for the grads and their family members.

For the parents who will be watching their sons and daughters step to the podium when their name is called, no doubt they will be thinking of how fast time has gone by since they first brought their child by the hand to preschool and kindergarten.

Such moments bring to mind the sentiments expressed in the lyrics of the song, Sunrise, Sunset, from the musical Fiddler on the Roof:

Is this the little girl I carried  
Is this the little boy at play?  
I don't remember growing older  
When did they?  
When did she get to be a beauty  
When did he grow to be so tall?  
Wasn't it yesterday when they were small?

We congratulate the Class of 2024 for all of the accomplishments that have earned them the right to step onto that podium to receive their diplomas. We know we join with all of the members of our community in wishing them blue skies and sunny days, both on their Graduation Day and in the years ahead.

## DRIVERLESS CARS: WE CAN'T WAIT!

We recently returned from a trip to San Francisco to visit our daughter and got the chance to ride in the driverless taxis from Waymo, the company owned by Google, which has been operating in San Francisco and Phoenix for the past few years.

At first we were skeptical of taking a ride in the cars, which have received some bad press, but Kate (who has been using the service for a number of months) assured us it was perfectly fine.

The vehicles, which are electric Jaguar SUVs, make you feel as if you are riding with a luxury limo service. They are clean, quiet, and have leather seats. They also play soft, relaxing music, though you have the option to choose different genres.

Most importantly, the Waymos obey the speed limits, always signal when changing lanes, never rush through a yellow light, let alone a red light, and yield to pedestrians in crosswalks. In other words, the Waymos are far safer than human-operated vehicles.

The experience made us realize that driverless vehicles, guided by AI, will be commonplace in the not-too-distant future -- a future that will make our roads far safer than the carnage that exists today in which more than 40,000 Americans are killed and countless tens of thousands more are severely injured every year thanks to human operators who either are texting-and-driving, under the influence, engaged in road rage, falling asleep at the wheel, inexperienced, too old, blinded by the sun, disobeying the traffic laws, or are just bad drivers.

Driverless cars also will have a huge positive financial impact on our society. Auto insurance rates will go down precipitously (especially for young drivers), car repairs caused by accidents will be minimal, health care costs will decline enormously because of the decrease in auto-related injuries, and senior citizens will retain their independence.

In short, we have seen the future of cars without human operators -- and we can't wait!

## SUBSCRIPTION INFORMATION

Chelsea Record is published every Thursday by the Revere-based Independent Newspaper Group.

Periodical postage rates paid at Boston, MA. Subscription rates are \$30 per year in Chelsea, and \$70 per year outside the city. The Chelsea Record assumes no financial responsibility for typographical errors in advertisements, but will reprint that part of the advertisement in which the error occurs.

Advertisers will please notify the management immediately of any errors that may occur. Chelsea Record, 101-680, at 385 Broadway, the Citizens Bank Building, Suite 105, Revere, MA 02151, is a weekly publication. Periodicals postage paid at Boston, MA 02110. POSTMASTER: Send address changes to Independent Newspaper Group, 385 Broadway, Suite 105, Revere, MA 02151.

USPS NO. 101-680

# Forum

## CITY PAWS

### Garden tips for pet people

Last summer, our block had a serious outbreak of Pokeweed, a highly toxic and invasive plant. It started in one neglected front garden and quickly spread up and down the street. We warned neighbors with dogs and showed them photos of the plant. This was crucial to help them avoid it as they walked their dogs along the fences it leaned over.

This issue reminded us that gardeners and homeowners with gardens are not the only ones who must be aware of toxic plants, mulch, and garden chemicals.

#### What Are the Dangers?

The AARP outlined some of the dangers in an article on safe gardening for the whole family: "Pet owners who share their homes (and yards) with dachshunds that dig, corgis that chew, Dobermans that drink from the bird bath and Labrador retrievers that treat the compost like a buffet (in addition to adventurous cats and maybe even some chickens) often go to great lengths to create pet-friendly yards where their four-legged friends can hang out without getting sick."

The AARP list of "6 Tips for Planting a Pet-Safe Garden" included some we've seen elsewhere, like learning about and removing toxic plants, reading directions and using garden chemicals and sprays with care, using safer options, and being



With many reports of coyotes in urban areas, supervising your dogs when they are in the garden is a good idea. (Photo by: Hiro Takashima)

cautious in your selection of mulch because some, like cocoa bean mulch, can be harmful to dogs.

They also added three tips that went beyond common knowledge. They suggested you do your best to discourage ticks and fleas and protect pets allowed in the garden with treatments for these parasites. If you have a compost heap or container, you should ensure your pets (and we would add rodents) are not attracted by it.

They pointed out the dangers to pets when using sharp garden tools or power equipment and suggested keeping curious animals out of the garden when you trim trees and hedges or mow the lawn.

With many reports of coyotes in urban areas, supervising your dogs when they are in the garden is a good idea.

#### Safe and Fun

How safe a particular

pet is in a garden depends on the age, breed, temperament, and how well-trained that animal happens to be. Like all other aspects of life with dogs and cats, training your companion to be a polite garden visitor will take some effort.

Sighthounds, like Greyhounds, tend to be couch potatoes outside their daily exercise routine. Like small breeds designed to be human companions, these guys are typically easy on a garden. However, dogs with high energy and strong instincts to dig, guard, or hunt need careful monitoring and correction.

If you have a digger, consider building a sandbox and encouraging your pup to burrow there rather than dig up your plants. Some savvy gardeners have added a piddle post, perhaps a piece of driftwood, for male dogs to confine their marking instinct to one place.

Other dog-loving gardeners have added water features that are a favorite cooling-off spot for their companions. Providing sun and shade options lets your dog choose where to rest as the seasons change.

#### The Pokeweed Vigilante!

Fortunately, our pokeweed problem disappeared overnight. It was there one day, and the plants were gone the next morning. A person or persons unknown removed the pokeweed. They did a great job, judging by the minor regrowth we've seen this spring. We hope they disposed of it safely, which is our final reminder. In addition to removing toxins and dangers from your garden, you must be careful about how you dispose of them.

*Do you have a question or topic for City Paws? Send an email to Penny@BostonZest.com with your request.*

## Flatiron // CONTINUED FROM PAGE 1

construction," said Poor. "There is a lot of permitting, engineering, and procurement to get through. We do feel like this is an opportunity for people within Chelsea to get the necessary training and ... be able to work on these projects."

Poor said that during the approximately two-year construction of the project, there will be about 100 to 125 workers on site. When the site is up and running, Poor said there will be a much smaller staff needed to monitor and maintain the facility.

Flatiron has also been working closely with the fire department about the project to get its feedback on the preliminary design.

The property itself is about 3.7 acres and includes Willoughby Street, which Poor said will be the main access point to the project.

The property is also adjacent to the Eversource Chelsea electrical substation. Poor said this means Flatiron will be able to use an underground connection to tie into the electrical grid.

The proposed building itself would be two stories and will have a number of compartment areas where the batteries will be stored. Outside the building will be energy inverters, transformers, and other infrastructure.

Planning Board member Mimi Rancatore did raise some questions about the size of the building being proposed by Flatiron, noting that the technology will change rapidly in the coming decades.

"I understand the importance of what it is, but it is a big building and it has not many aesthetics to it," said Rancatore. "It would be nice, by pushing it back, to have at least some green space on Eastern Ave."

Chelsea resident Tiffany Morreira asked about the economic benefit of the project to the city once it is up and running, noting that there were not be many employees once the construction was completed and that it only added a more industrial look to the area.

Poor said the economic benefits to the city included the PILOT of about \$1.4 million per year to the city for the life of the project.

"We would be one of the largest taxpayers in the city of Chelsea," said Poor.

In addition, the host community agreement would be just under \$600,000 per year for job training in the city for the life of the project, Poor said.

"I believe the tax revenue for the current owner of the property is about

\$74,000 per year, so it's a pretty significant increase for the city," said Poor.

As for the look of the building, Poor noted that the project design is still in the preliminary stages.

Planning Board Chair Tuck Willis said the city has hired a consultant to review the Flatiron proj-

ect, and that the results of that study were expected prior to the board's July meeting.

"It has been suggested that we not vote on this until we get the consultant's report," said Willis as the board voted to continue the public hearing until that July meeting.

## CHELSEA RECORD

ESTABLISHED 1890

stephen.quigley@reverejournal.com

### Advertising and Marketing

Director of Marketing  
Debra DiGregorio  
deb@reverejournal.com

Assistant Marketing  
Directors  
Maureen DiBella

Advertising  
Ellen Bertino

Editorial  
Reporters,  
Regular Contributors  
Cary Shuman  
(Cary@lynnjournal.com)

Copy Editing, Layout  
Scott Yates

Business Accounts  
Executive  
Judy Russi

Printer  
GateHouse Media

781-485-0588 • www.chelsearecord.com

# EBNHC appoints Mazul as Interim Chief Medical Officer

East Boston Neighborhood Health Center (EBNHC) announced the appointment of Julio Mazul, MD, as Vice President and Interim Chief Medical Officer. During his more than 17-year career at EBNHC, Dr. Mazul has served in several roles, including Medical Director of the Women's Health Department and, most recently, Deputy Chief Medical Officer. A practicing OB/GYN, Dr. Mazul has directed numerous organizational-wide clinical quality and population health initiatives, including reducing barriers to care for underserved women and families, and advancing health equity for the LGBTQ community through staff education and training.



Dr. Julio Mazul.

in OB/GYN at the Beth Israel Deaconess/Harvard Medical School program.

"Serving as Interim Chief Medical Officer is a unique honor for me. While I am a doctor and a leader, I am also the son of Guatemalan immigrants; I understand what it means to be one of our patients and approach my work with that understanding every day," said Dr. Mazul. "I am proud to be part of EBNHC's talented team of providers and excited to be in a position to build a healthier future for everyone in our community."

Dr. Mazul assumes the position following Dr. Jackie Fantes, MD, FAAFP, who served as the system's Chief Medical Officer for almost a decade. EBNHC will provide additional updates on its long-term plans in the months ahead.

East Boston Neighborhood Health Center, soon to be NeighborHealth as of June 1, 2024, is one of the nation's largest Federally Qualified Health Centers (FQHCs) and the largest community-based

primary care health system in Massachusetts, serving over 120,000 people and recognized by the Health Resources and Services Administration (HRSA) as a National Quality Leader. For more than 50 years, EBNHC has offered access to comprehensive primary care, specialty care and emergency care for patients in the Commonwealth. In a first-of-its-kind merger in 2020, EBNHC joined forces with the South End Community Health Center and expanded services to patients who live and work in Boston's South End and Roxbury neighborhoods.

EBNHC champions innovative care models to actively bridge health equity gaps in our low-income and immigrant communities with services unique from other health care providers in our state. In addition to primary and specialty care, EBNHC operates Massachusetts' only satellite Emergency Department, which is the fourth busiest ED in Boston and is co-located with advanced radiology, including CT scan services, same-day Behavioral Health Urgent Care and an integrated pharmacy. Today, EBNHC remains dedicated to promoting and sustaining healthy communities, families, and individuals both in and out of the exam room by providing accessible, person-centered, compassionate, and high-quality health care services. For more information, visit [www.ebnhc.org](http://www.ebnhc.org)

"I believe Dr. Mazul's medical experience, dynamic leadership, and lived experience will help to advance our high standards of culturally responsive, high-quality patient care," said EBNHC President and CEO, Greg Wilmot. "Dr. Mazul has played a vital role in shaping the organization's clinical quality priorities; his decades of work in women's health reinforces our health system's commitment to caring for women and families through all stages of life."

EBNHC is the largest community-based primary care health system in Massachusetts and recently received recognition from the Department of Health and Human Services' Health Resources and Services Administration (HRSA) for its role as a national quality leader in community health care. In 2023, EBNHC received seven quality awards from HRSA, including National Quality Leader gold badge for excellence in Maternal and Child Health.

Dr. Mazul was born and raised in Los Angeles, California. He received his Bachelor of Science in biology and a minor in history from the University of California, San Diego. Dr. Mazul obtained his medical degree from the Georgetown University School of Medicine and completed his residency

## 5 TIPS FOR DRONE SAFETY THIS SUMMER

**STAY CLEAR OF CONTROLLED AIRSPACES AND KNOW THE RULES:**

- 1** Register your drone
- 2** Never fly near any aircraft, airports or other controlled airspace
- 3** Keep your drone in sight at all times
- 4** Always fly below 400 feet
- 5** Learn the rules for Remote ID and flying over crowds

**SCAN FOR MORE INFO ON DRONE SAFETY**

Register your drone with the Federal Aviation Administration at [faadronezone.faa.gov](http://faadronezone.faa.gov)

### NOTICE OF A PUBLIC HEARING

Notice is hereby given that a Community Outreach Meeting for a Proposed Marijuana Establishment is scheduled for:

Date : Wednesday, June 5th, 2024  
Place : Chelsea City Hall  
500 Broadway, Chelsea, MA, 02150  
(3rd floor City Councilor Chamber)  
6:00 pm

The Proposed Marijuana Establishment is anticipated to be located at :  
267 Broadway Chelsea MA, 02150  
There will be an opportunity for the public to ask questions.

For any questions about this meeting, or comments on the proposal feel free to contact  
Vladimir Samuel 413-325-4126  
[vsmbllc@gmail.com](mailto:vsmbllc@gmail.com)

### AVISO DE AUDENCIA PUBLICA

Por la se de avisa de una reunion de la comunidad sobre un establecimiento de Marihuana. Estara programada para Fecha:

Miércoles, June 5th, 2024  
Lugar : Chelsea City Hall  
500 Broadway, Chelsea, MA, 02150  
(3rd floor City Councilor Chamber)  
6:00 P.M

El propuesto establecimiento de Marihuana sera localizada.

267 Broadway Chelsea MA, 02150  
Habrá oportunidad para el público de preguntar preguntas.

Si tiene cualquier pregunta sobre esta reunion, oh comentarios sobre la propuesta porfavor de contactar  
Vladimir Samuel 413-325-4126  
[vsmbllc@gmail.com](mailto:vsmbllc@gmail.com)

A SHORT STORY ABOUT GROWING UP WITH AN UNFAIR ADVANTAGE.

POLIO.

As one of the last American children to contract polio, Jeffrey Galpin grew up in a world of iron lungs and body casts, alone with his imagination. His story would be dramatic enough if it was just about his battle with this dreaded disease.

But Jeffrey Galpin did more than survive polio. He went on to a list of achievements in medical research—including being the principal investigator in applying the first gene therapy for HIV/AIDS.

Dr. Galpin actually credits his own incurable condition for giving him the focus that made him so passionate in his research. His story leaves us with two of the most contagious messages we know. Don't give up, and remember to give back. If Dr. Galpin's story inspires just one more person to make a difference, then its telling here has been well worth while.

# CHELSEA HIGH SCHOOL SENIOR PROM AT THE DANVERSPORT YACHT CLUB



Gavin MacPherson and Ashley Marra.



Jonell Brown with Katherine Merino.



Jefferson Torres and Tatiana Palacios.



Entering the Danversport Yacht Club for the CHS Senior Prom, Heidy Martinez and Sindy Cal.



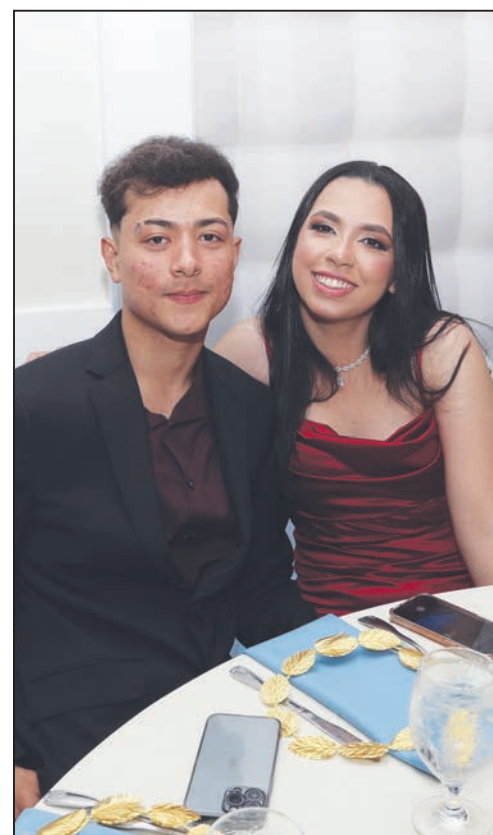
Marie Morzia and Puetra.



President of the CHS Class of 2024 Jimmy Merino and Ana Rivera.



Alexandra Guimaraes and Andres Cardona.



Lucas Costa and Yasmin Andrade Silva.



Esloani Alacson-Gutierrez, Esther Hercules, Hena Atela, Cesar Montigudo.



Ana Romero, Superintendent of Chelsea Public Schools Dr. Almi Abeyta, CHS Principal Obed Morales, and Ariana Gilbert at the Danversport Yacht Club last Saturday night.

## Same neighbors. New name.



NeighborHealth

We are changing our name.

Our commitment to community-based care is the same.

Learn more at [ebnhc.org](http://ebnhc.org)

A SHORT STORY ABOUT GROWING UP WITH AN UNFAIR ADVANTAGE.

POLIO.

As one of the last American children to contract polio, Jeffrey Galpin grew up in a world of iron lungs and body casts, along with his imagination. His story would be dramatic enough if it was just about his battle with this dreaded disease.

But Jeffrey Galpin did more than survive polio. He went on to a list of achievements in medical research—including being the principal investigator in applying the first gene therapy for HIV/AIDS.

Dr. Galpin actually credits his own incurable condition for giving him the focus that made him so passionate in his research. His story leaves us with two of the most contagious messages we know. Don't give up, and remember to give back. If Dr. Galpin's story inspires just one more person to make a difference, then its telling here has been well worth while.



AAOS  
CELEBRATING HUMAN HEALING  
[orthoinfo.org](http://orthoinfo.org)



Yasmine Villatoro and Joshua Williams.

### CHELSEA MEMORIAL DAY 2024

On Monday, May 27, city officials and residents gathered on the lawn in front of City Hall to observe and remember those American soldiers who died in wars around the world. More than 100 people attended the moving ceremony that included speeches from city officials as well as readings by local Chelsea School children.

The Chelsea High Band provided music for the different parts of the ceremony. Norma Arbaiza sang the national anthem and Jorge Arjun Ramirez of Chelsea High Band played Taps. Shannon Chick served as the conductor.

Veteran's Director Francisco Toro and staff of Chelsea Veterans Service coordinated the more than hour and half ceremony.



At the Memorial Day ceremony were (left to right) Chelsea School Superintendent Dr. Almi Albeyta, Councillor Calvin T. Brown, Joe Mahoney and Bob Borden.



Les Lerman (right) who served in United States Air Force, is shown with Carlos Rivera.



Skylah Claudio, a fourth grade student at Sokolowski School, talked about the history of the Garden Cemetery.



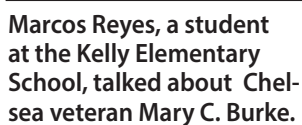
Yariel Romero DeJesus an 8th Grade student at Seigal Clark Ave Middle School reads the Governor's Proclamation.



John Annese passes out the flags.



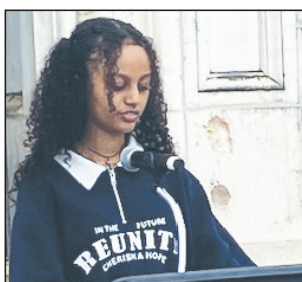
Frank Kowalski (left) and Police Chief Keith Houghton.



Marcos Reyes, a student at the Kelly Elementary School, talked about Chelsea veteran Mary C. Burke.



Steven Posada of the Wright Science and Technology Academy reads poems by students.



Veronica Zewdui of the Browne Middle School recites a poem.



Members of the Chelsea High School Band perform during the ceremony.



Members of the Chelsea Fire Department were on hand at the Memorial Day Ceremony.

# CAMBRIDGE TRUST

PRIVATE BANKING WEALTH MANAGEMENT

## LOOKING FOR A HOME LOAN? CONNECT WITH OUR EXPERT TEAM TODAY.

Cambridge Trust is here to guide your mortgage journey. Experience highly personalized financial service as our team guides you through the process.

Explore our **competitive rates** and flexible terms.



SPEAK WITH OUR EXPERT TEAM TODAY.



NMLS ID 697495

# June service changes: MBTA continues repair work to improve reliability across the system

The MBTA today announced service changes in June on the Orange, Red, Kingston, Middleborough, Greenbush,

Needham, and Haverhill lines. The MBTA will continue working to maintain its infrastructure and improve reliability across

the system. Riders can find more information on service changes through in-station signage, in-station public

announcements, and at [mbta.com/alerts](http://mbta.com/alerts). Transit Ambassadors and MBTA staff will be available on-site to offer information

and assistance during these service changes. Riders are encouraged to subscribe to T-Alerts or to follow the MBTA on X (the site for-

merly known as Twitter) @MBTA, @MBTA\_CR, and @MBTA\_CR\_Alerts for up-to-date service information.

## On the Orange Line:

Orange Line service will be suspended in the following areas during the following dates and times:

As previously announced, between Wellington and Back Bay stations all day and every day from May 28-June 6.

Free and accessible shuttle buses will make all stops between Wellington and North Station.

For service through the downtown area near Back Bay, riders are encouraged to utilize parallel Green Line service between North Station and Copley. The MBTA will increase Green Line service during this time to accommodate high ridership.

Riders are encouraged to consider the Haverhill Commuter Rail Line for stops to and from Oak Grove, Malden Center, and North Station.

This service change is in place in support of MassDOT's Maffa Way/Mystic Avenue Bridge Superstructure Replacements project and the MBTA's Track Improvement Program. The Maffa Way/Mystic Avenue Bridge Superstructure Replacements project will replace the

two deteriorated bridge superstructures and improve bicycle, pedestrian, and transit facilities. The Track Improvement Program will replace tracks and ties to alleviate speed restrictions along the line while crews maximize the outage by performing signal work and station amenity upgrades, including new lighting, painting, tiling, power washing, and more.

Between North Station and Oak Grove stations beginning at approximately 8:45 PM on Friday, June 7, and continuing all day and every day for the weekend of June 8-9.

Free and accessible shuttle buses will make all stops between North Station and Oak Grove.

Riders are encouraged to consider the Haverhill Commuter Rail Line for fare-free service to and from Oak Grove, Malden Center, and North Station. Regular fares should be purchased beyond Oak Grove.

This service change is in place to allow crews to perform critical signal upgrade work.

Between Wellington and North Station all day and every day for nine days from June 22-30.

Free and accessible shuttle buses will make all stops between Wellington and North Station.

There will be free fares at Wellington and North Station with the fare gates open.

Riders are encouraged to consider the Haverhill Commuter Rail Line for fare-free service to and from Oak Grove, Malden Center, and North Station. Regular fares should be purchased beyond Oak Grove.

This service change is in place in support of MassDOT's Maffa Way/Mystic Avenue Bridge Superstructure Replacements project and the MBTA's Track Improvement Program. The Maffa Way/Mystic Avenue Bridge Superstructure Replacements project will replace the two deteriorated bridge superstructures and improve bicycle, pedestrian, and transit facilities. The Track Improvement Program will replace tracks and ties to alleviate speed restrictions along the line while crews maximize the outage by performing signal work and station amenity upgrades, including new lighting, painting, tiling, power washing, and more.

**On the Red Line:** Red Line service will experience service changes in the following areas during the following dates and times:

Red Line service will be suspended between Alewife and Harvard stations during the weekends of June 1-2 and June 29-30.

Free and accessible shuttle buses will make all stops between Alewife and Harvard.

Bus Route 77 will be fare-free. Riders are encouraged to consider the Fitchburg Commuter Rail Line for fare-free service between Porter and North Station. Regular fares should be purchased beyond Porter.

This service change is in place to perform track preparations in advance of Track Improvement Program work planned on the Red Line next month. To improve safety, reliability, and the customer experience, crews will perform track and tie replacement work; infrastructure upgrades; station amenity upgrades like new lighting, painting, tiling, and power washing; and more.

Red Line service will be suspended between Broadway and Braintree stations on the Braintree Branch during the weekends of June 8-9 and June 15-16.

Free and accessible shuttle buses will make all stops between Broadway and Braintree.

Riders are encouraged to use Commuter Rail express shuttle bus service from Braintree if possible. Express shuttle buses will operate directly between South Station and Braintree.

Riders should note that regular Red Line train service will operate on the Ashmont Branch between JFK/UMass and Ashmont.

This service change is in place to allow crews to perform necessary work as part of the Dorchester Avenue Bridge Replacement Project and the Track Improvement Program. Originally built in 1925 and last rehabilitated in 1975, the Dorchester Avenue Bridge will be replaced to protect its structural integrity and ensure reliable service. When complete, this project will result in safer, more reliable Red Line service. The Track Improvement Program will replace tracks and ties to alleviate speed restrictions along the line while crews maximize the outage by performing signal work and station amenity upgrades, including new lighting, painting, tiling, power washing, and more.

The outbound/northbound platform at Ken-

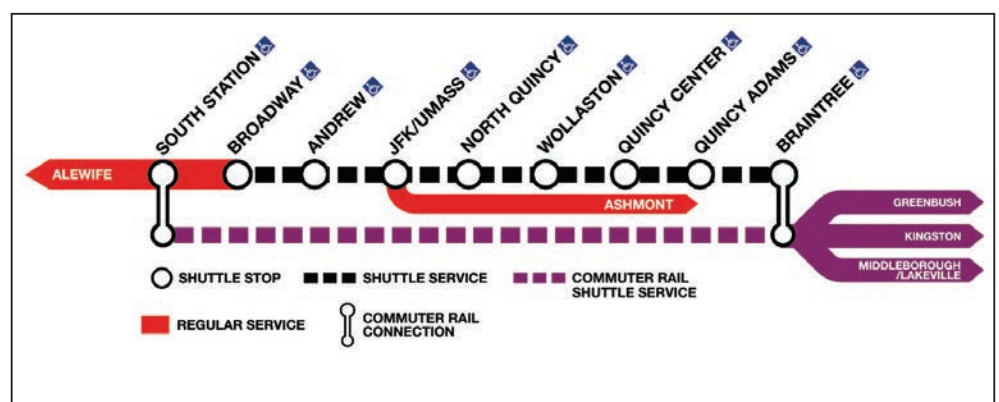
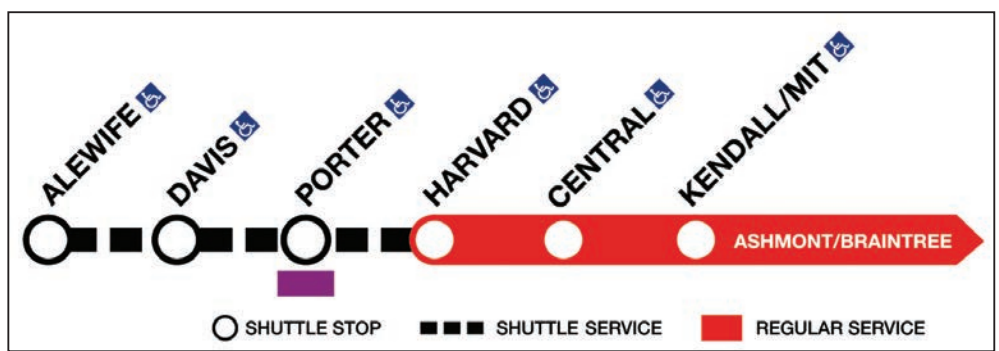
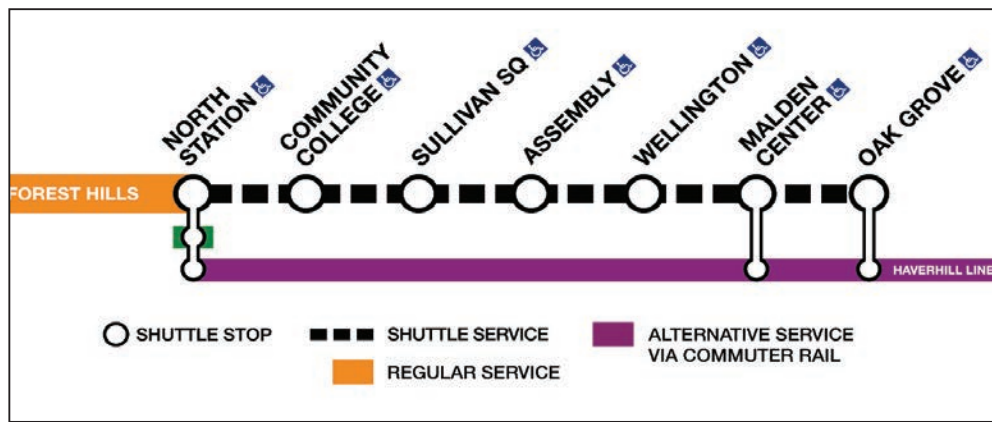
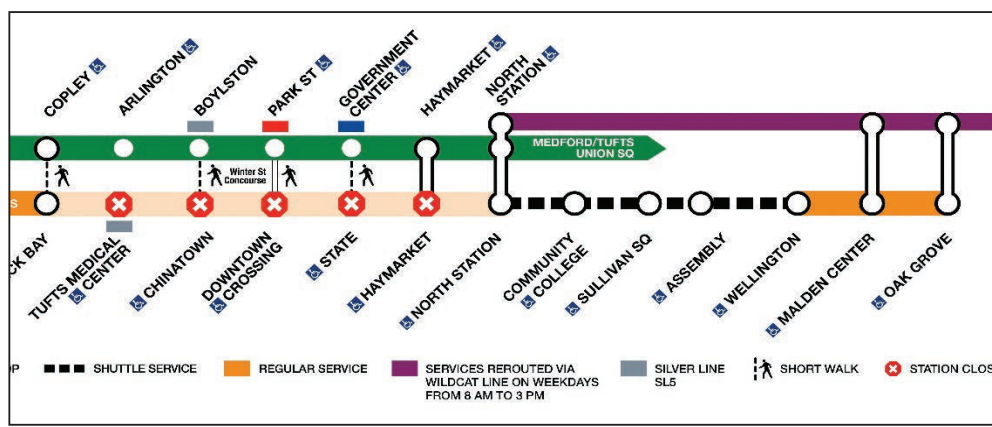
dall/MIT station will be closed beginning at approximately 8:45 PM on Friday, June 28, and continuing all day and every day for the weekend of June 29-30.

Outbound/Northbound Red Line trains will bypass Kendall/MIT during this time.

For outbound/northbound riders disembarking at Kendall/MIT, riders should instead travel to Central station to board an inbound/southbound train back to Kendall/MIT. The fare gates will be open at Central inbound/southbound for a free transfer.

For outbound/northbound riders boarding at Kendall/MIT, riders should instead board an inbound/southbound train, disembark at Charles/MGH, and travel to the outbound/northbound platform for continued train service. Riders can move between the platforms for free at Charles/MGH without passing through fare gates.

This service change is in place to accommodate the adjacent transit-oriented development project, which has partnered with the MBTA to rebuild and update the outbound/northbound Kendall/MIT station entrance.



## On the Commuter Rail

On the Kingston, Middleborough, and Greenbush Commuter Rail lines:

The Kingston, Middleborough, and Greenbush Commuter Rail lines, which run adjacent to the Red Line, will also experience service changes due to work on the Dorchester Avenue Bridge Replacement Project during the weekends of June 8-9 and June 15-16.

Free and accessible shuttle bus service will replace all trains between South Station and Braintree. Express shuttle bus service will also operate directly between South Station and Braintree Station.

Passengers should note

that bicycles are not allowed on shuttle buses, and regular Commuter Rail fares will be collected between Kingston, Middleborough, Greenbush, and Braintree Stations.

Keolis Customer Service Agents, MBTA staff, and Transit Ambassadors will be on-site at impacted stations to support riders.

The diversion schedule will be available online at [mbta.com](http://mbta.com).

## On the Needham Commuter Rail Line:

The Needham Commuter Rail Line will be suspended between Needham Heights and South Station during the weekend of June 1-2, the weekend of June 8-9, and all day and

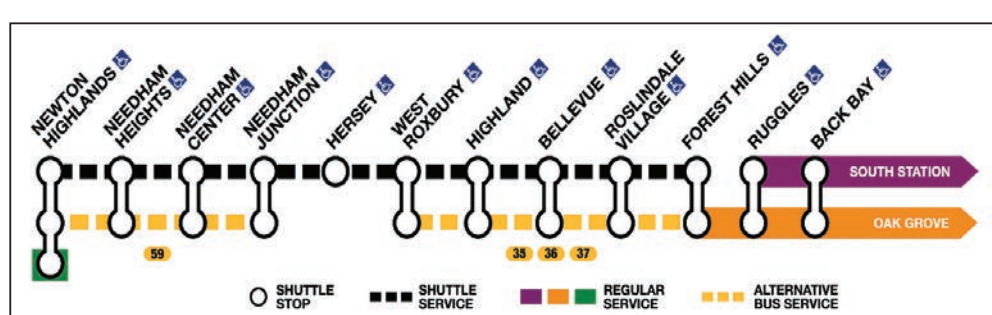
every day from June 28-July 1.

Free and accessible shuttle bus service will operate between Needham Heights and Newton Highlands on the Green Line D Branch as well as Needham Heights and Forest Hills on the Orange Line.

Passengers can present their June mTicket monthly pass to Green Line operators and/or Transit Ambassadors to board the Green Line D Branch at Newton Highlands and Orange Line at Forest Hills.

Bus Routes 35, 36, 37, and 59 will be fare-free.

A dedicated diversion schedule will be in effect and available on [mbta.com](http://mbta.com).



com soon.

This service change allows for crews to perform Positive Train Control (PTC) / Automatic Train Control (ATC) work. PTC/ATC is a federally mandated safety system that sends signals to trains about potentially unsafe conditions, automatically slowing and stopping a train if needed.

## On the Kingston Commuter Rail Line:

The Kingston Commuter Rail Line will be suspended between Kingston and Halifax station during the weekend of June 22-

23.

Free and accessible shuttle bus service will operate between Kingston and Halifax.

A dedicated diversion schedule will be in effect and available on [mbta.com](http://mbta.com) soon.

This service change is in place while Keolis crews perform work on the Landing Road Bridge in Kingston.

## On the Haverhill Commuter Rail Line:

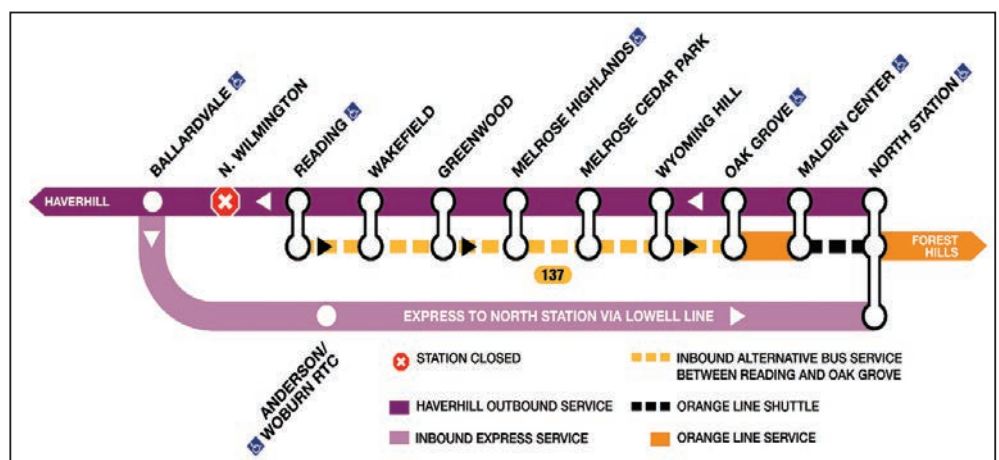
A special Construction Schedule will be in effect on the Haverhill Commuter Rail Line begin-

ning May 20 through the end of the summer. The Construction Schedule is available now at [mbta.com](http://mbta.com).

During this time, midday inbound trains will operate express between Ballardvale and North Station.

For service to Boston, passengers are encouraged to consider a free connection with Bus Route 137, which operates parallel service.

Passengers may also consider connecting with Lowell and Haverhill Line train service at Anderson/Woburn station.



The MBTA previously announced service changes in May. More information is available here.

The MBTA understands how these service changes affect riders' daily travels during this period, but we are com-

mitted to improving your travels long term with more reliable, timely, and safe service. We thank riders for their patience as

we deliver this important work and for continuing to ride our system.

For more information, visit [mbta.com](http://mbta.com) or con-

nect with the T on X (the site formerly known as Twitter) @MBTA and @MBTA\_CR, Facebook /

TheMBTA, Instagram @theMBTA, Threads @thembta, or TikTok @thembta.



# EBNHC to honor six exceptional leaders for their positive impact on the health of local community

Special to the Independent

East Boston Neighborhood Health Center (EBNHC), soon to be NeighborHealth, is thrilled to announce the Art of Health Care fundraising event at the Museum of Fine Arts (MFA), Boston on June 12. This year's reception will include the 2024 Health Equity Awards where six recipients will be honored.

The Art of Health Care event allows EBNHC, the largest community-based primary care health system in Massachusetts, to provide greater support to programs and services dedicated to eliminating barriers to care due to social factors such as race, language, and economic mobility. All funds raised will have a transformative impact on vulnerable populations by supporting numerous EBNHC programs. This includes providing coordinated health and wellness care to children with developmental and cognitive disabilities; supporting older adults stay healthy and independent in the community; and developing educational training programs for the next generation of healthcare professionals.

"The 2024 Health Equity Awards give us a rare opportunity to publicly celebrate six individuals and organizations who, through their work, have improved the lives of the communities served by our health center," said Greg Wilmont, President and CEO of the East Boston Neighborhood Health Center. "From the iconic MFA, we will honor leaders who understand the power of social determinants to drive health outcomes and have made addressing them a major focus of their personal and professional lives."

EBNHC is honored to recognize the following changemakers who have helped break down barriers to care for our most vulnerable communities throughout Greater Boston:

- Dr. Thea L. James, MD, MBA. Vice President of Mission, Boston Medical Center is to be recognized as Health Equity Champion for her leadership in dismantling medical mistrust in Boston's Black community.

- Alberto Vasallo, III, CEO/ President of El Mundo Boston is to be recognized as Health Equity Champion for his commitment to partnering across sectors to reduce health disparities in Boston's Latinx community.

- Dr. Gerald Hass, MD, Co-Founder, South End Community Health Center is to be recognized as Health Equity Trailblazer for co-founding the South End Community Health Center more than 50 years ago.

- Jack Cradock, President Emeritus, East Boston Neighborhood Health Center is to be recognized as Health Equity Trailblazer for being an early and ardent advocate of community-based health systems in Massachusetts.

- Rita Sorrento, Chair, Board of Directors, East Boston Neighborhood Health Center is to be recognized as Health Equity Trailblazer for her long-time healthcare, education and community advocacy.

- Seae Ventures, LLC, an investment firm specializing in early-stage healthcare technology and services companies, will be recognized as Health Equity Partner for uplifting talented entrepreneurs committed to addressing health and social challenges.

"These leaders inspire us on our journey toward achieving health equity and we are honored to present them with these awards," said EBNHC Vice President of Development and Chief Human Resources Officer Steven Snyder. "Just as an artist creates a masterpiece with precision and care, addressing disparities is no different; it is complex work that requires perseverance and creativity from all who champion it."

## Brian Vokey

September 18, 1973 - May 24, 2024

Brian Vokey of Winthrop, formerly of Chelsea, passed away on Friday, May 24 with his loving wife by his side.

Brian grew up in Chelsea, the son of Kathleen (Whalen) Vokey and the late Wendell Vokey. He attended the Northeast Vocational School but he would tell you that he graduated from the school of hard knocks.

Brian married the love of his life, Melanie Daloia Vokey in October 2011.

Brian was the loving father of Ryan Maguire and Mari Vokey, beloved grandfather to Emilia Saggese and Provida Vokey. He is also survived by his brother, Wendell (Buddy) Vokey and Daniel and Nevelle Vokey.

Brian loved his family, friends, coworkers and, of course, a good one liner. His quick wit, selflessness



and concern for others, even with all of his personal health challenges, are the qualities that will be sorely missed.

There will be a celebration of life on Friday, June 7 from 4 to 8 p.m. at the Winthrop Lodge of Elks #1078, 191 Washington Avenue, Winthrop.

## Annie Zaremba

She was a source of strength, always ready with a smile and loving hug



Annie J. (McInnis) Zaremba, 97, passed away on May 26, at her Chelsea residence surrounded by her four daughters. She was predeceased by her loving husband of sixty-eight years just ten months ago.

Born in Danvers on July 28, 1926, she was the daughter of the late Charles Augustus and Margaret (Dykes) McInnis. She was raised and educated in Danvers and graduated from Holten High School in 1944.

After business school, Annie pursued a career in personal finance and tax strategy spanning more than 35 years in Government Services Administration and seasonally at H&R Block as a tax preparer. Her greatest accomplishment though was raising her family and caring for her grandchildren.

She leaves behind four loving daughters: Anne Fischer and her husband, Martin of Ellicott City, MD, Susan Moore and her husband, John of Peabody, Jane Szarythe and her husband, Richard "Turk" of Chelsea and Nancy Dawson and her husband, Jay of Ipswich. She was a loving grandmother "Nana" to Bethany, Brycen and his wife, Jen and Kallie Fischer, Shauna Moore, Luke Szarythe, Amanda Szarythe Goel and her husband, Anurag, Emma, Abigail and Jack Dawson and proud great-grandmother of Rowan and Tatum Fischer. She is also survived by many nieces and nephews. She was preceded in death by her siblings, Charles McInnis, James McInnis, Mary Simard, Priscilla Comeau, Betty Perry, Florence Mackey and William McInnis.

As a parishioner of St. Stanislaus Church and Our Lady of Grace Parish, Annie was very active in her faith, traveling on pilgrimages to Japan, Korea, China, Poland and Israel with Father James McCurry, OFM Conv., of the Franciscan Friars. She loved the Virgin Mary and recited her rosary prayerfully for the health and healing

of many who crossed her path.

Annie loved to vacation at her home on the Cape and at her timeshare in Aruba. But her favorite pastime was enjoying conversation around the kitchen table and sipping tea with family and friends, a pastime now enjoyed by her daughters and granddaughters. She was sweet, kind, quick-witted, patient and exuded a calm peaceful presence. She was a source of strength, always ready with a smile and loving hug. She had a favorite poem, "Don't Quit," by an unknown author, which she memorized as a child and recited throughout her lifetime. She will be sorely missed and will forever live in our hearts.

Relatives and friends are most kindly invited to attend visiting hours at the Welsh Funeral Home, 718 Broadway, Chelsea today, Thursday, May 30 from 4 to 8 p.m. Her funeral will begin from the Welsh Funeral Home on Friday, May 31 at 9 a.m. immediately followed by a Funeral Mass at Our Lady of Grace Church, 59 Nichols Street, Chelsea at 10 a.m. Services will conclude with interment at Woodlawn Cemetery, Everett.

In Annie's honor, please enjoy a cup of tea with loved ones, spread kindness and keep love in your heart. If so desired, donations can be made in Annie's name to the Franciscans Friars, Shrine of St. Anthony, 12300 Folly Quarter Road, Ellicott City, MD 21042. [www.shrineofstanthony.org](http://www.shrineofstanthony.org)

For directions or to send expressions of sympathy, please visit [www.Welsh-FH.com](http://www.Welsh-FH.com).



To place a memoriam in the Chelsea Record please call 781-485-0588

## OBITUARIES

All obituaries and death notices will be at a cost of \$150.00 per paper. Includes photo.No word Limit. Please send to [obits@reverejournal.com](mailto:obits@reverejournal.com) or call 781-485-0588

### TORF FUNERAL SERVICE

Pre-need planning with our price protection guarantee. Arrangements made at our facility or in the comfort of your own home

4 generations of the Torf Tradition:  
Deborah Torf Golden Amy Torf Golden  
Hyman J. Torf (1903-2000)  
M.L. Torf (1867-1940)  
Richard A. Pruneau

(617) 889-2900  
(800)428-7161  
[www.torffuneralservice.com](http://www.torffuneralservice.com)

visit [www.chelsearecord.com](http://www.chelsearecord.com)

### Carafa Family Funeral Home Inc.

389 Washington Ave. Chelsea  
617-884-4188

Amy C-Almas  
William R. Carafa -  
Funeral Directors  
[carafafuneralhome.com](http://carafafuneralhome.com)

"Meeting the needs of the families we serve."

### ANTHONY MEMORIAL - FRANK A. WELSH & SONS FUNERAL HOME

Peter A. Zaksheski  
Type III Licensed Funeral Director

718 Broadway, Chelsea - 617-889-2723 - 617-884-3259  
[www.ChelseaFuneralService.com](http://www.ChelseaFuneralService.com)

## For Advertising Rates, Call 781-485-0588

### THE COMMONWEALTH OF MASSACHUSETTS MASSACHUSETTS DEPARTMENT OF TRANSPORTATION HIGHWAY DIVISION

NOTICE OF A VIRTUAL PUBLIC INFORMATIONAL MEETINGS — Project File No. 606476

Two Virtual Public Informational Meetings will be hosted on the MassDOT website below for the Sumner Tunnel Restoration Project in Boston.

**WHEN:** Tuesday, June 11, 2024 | 6:00 p.m.  
Wednesday, June 12, 2024 | 6:00 p.m.

**WHERE:** [www.mass.gov/orgs/highway-division/events](http://www.mass.gov/orgs/highway-division/events)

**PURPOSE:** The Massachusetts Department of Transportation is hosting two virtual public information meetings to discuss the upcoming full closure of the Sumner Tunnel. The closure will impact abutters and regional traffic. These meetings will discuss steps the public can take to reduce the closure's impact on their commute. All residents, abutters, local business owners, and interested commuters are invited to attend. Meeting attendees will have the opportunity to ask questions and offer comments. Both meetings will provide the same information. Holding two meetings is an effort by MassDOT to accommodate everyone's schedules as best as possible. Spanish and Arabic interpretation will be available at the meeting.

**PROPOSAL:** The full tunnel closure will begin July 5, 2024 and end August 5, 2024. There are periodic weekend closures of the tunnel leading up to the full closure. There will be periodic weekend closures of the Sumner Tunnel in summer/fall 2024. The number of weekend closures is dependent on work completed by the contractor during the July 5 to August 5 full closure.

This meeting is accessible to people with disabilities. MassDOT provides reasonable accommodations and/or language assistance free of charge upon request (e.g interpreters in American Sign Language and languages other than English, live captioning, videos, assistive listening devices and alternate material formats), as available. For accommodation or language assistance, please contact MassDOT's Chief Diversity and Civil Rights Officer by phone (857-368-8580), TTD/TTY at (857) 266-0603, fax (857) 368-0602 or by email ([MassDOT.CivilRights@dot.state.ma.us](mailto:MassDOT.CivilRights@dot.state.ma.us)). Requests should be made as soon as possible and prior to the meeting, and for more difficult to arrange services including sign-language, CART or language translation or interpretation, requests should be made at least ten business days before the meeting.

This meeting will be hosted, or a cancellation announcement posted, on the internet at <https://www.mass.gov/orgs/highway-division/events>.

**JONATHAN GULLIVER**  
HIGHWAY ADMINISTRATOR

**CARRIE E. LAVALLEE, P.E.**  
CHIEF ENGINEER



# Department of Public Health report shows uptick in calls to State's Problem Gambling Helpline

The Massachusetts Department of Public Health (DPH) released the Fiscal Year 2023 Problem Gambling Helpline report, which highlighted an increase in call volume to the line and included initiatives that served more than 2,000 individuals in communities across Massachusetts in prevention efforts.

DPH established the Office of Problem Gambling Services (OPGS) in 2016 to mitigate the potentially harmful effects of gambling, which can take a toll on individuals and communities in Massachusetts. Problem gambling can significantly impact an individual and their family, relationships, social interactions, and employment. It disproportionately impacts people of color and has a high level of comorbidity with substance use and mental health disorders.

Community-based initiatives funded by OPGS raise awareness about problem gambling and provide access to resources. Campaigns and programs have targeted youth and men of color – two of the groups most likely to experience problem gambling – through community outreach, education through art, small group sessions, presentations, and events. Looking forward, OPGS will continue to target these populations through new initiatives, including youth peer-to-peer mentoring, telehealth services to improve access, and targeted public

awareness campaigns.

“As access to gambling expands in Massachusetts, we remain focused on supporting and promoting prevention, referral, and treatment options to help those with a gambling problem,” said Public Health Commissioner Robert Goldstein, MD, PhD. “The Problem Gambling Helpline is a centerpiece of these efforts. We are committed to working with our state and community partners to connect Commonwealth residents to appropriate resources so that people get the care they need.”

From July 2022 through June 2023, the Problem Gambling Helpline saw an increase in overall call volume and referrals from the previous year. The increase is likely the result of improvement in helpline services in coordination with public awareness campaigns, community efforts to provide individuals and families with education and resources, and sports wagering advertisements. There is currently no evidence to support that the increase in call volume and referrals is a direct result of an increase in problem gambling in the Commonwealth.

The helpline received 3,050 calls in Fiscal Year 2023, up from 1,378 calls in Fiscal Year 2022 for a 121 percent increase. Calls from those seeking support and information increased by 41 percent to 636 and calls resulting in referrals specifically for outpatient treatment in-

creased by 96 percent – to 185 from 362.

Of the 636 callers, 73 reported sports betting as their reason for seeking assistance – a 1,117 percent increase from FY22, when only six callers referred to treatment reported sports betting as their main concern.

Sports wagering in Massachusetts launched in casinos January 31, 2023; online sports wagering began March 10, 2023. Total call volume for the Problem Gambling Helpline was the highest from February through June 2023 with 2,069 calls, as sports wagering was launched and adver-

tisement of the Problem Gambling Helpline that is required to accompany sports wagering ads increased.

The report also found:  
• Calls from individuals seeking help increased to 380 in FY23 from 301 in FY22, while calls from loved ones of those with a gambling problem increased to 148 in FY23 from 106 in FY22.

• Calls from individuals in recovery increased to 89 in FY23, compared to 27 in FY22, an increase of 230 percent.

• Referrals by gambling type for casinos increased to 170 in FY23 from 45 in FY22, an increase of 278 percent.

• Male callers increased

by 56 percent to 500 in FY23 from 321 in FY22 while the number of female callers remained about the same – 137 in FY23 compared to 131 in FY22.

• Calls seeking referrals for treatment increased across all age groups in FY23. Those 30-to-39-years-old represented a 293 percent increase – to 169 in FY23 from 43 in FY22.

• Referral calls increased across all regions. The state's Northeast region had the largest increase of 62 percent – to 123 in FY23 from 76 in FY22.

“The Problem Gambling Helpline provides an

important connection between those who are experiencing problem gambling – including sports betting – and services that can help,” said Victor Ortiz, Director of the Office of Problem Gambling Services. “Expanded access to gambling in the Commonwealth poses risks, particularly to those in recovery, and highlights the need to provide responsive referrals to callers based on their needs. The OPGS is committed to monitoring the ongoing impacts of sports wagering and expanded access to gambling on individuals, families, and communities in the Commonwealth.”

• Revere • Everett • Winthrop • Lynn • East Boston • Chelsea • Charlestown

## Independent Newspaper Group Classified

71-485-0588  
Fax: 71-485-1403  
Ext 102  
E-Mail Your Ad To: class@reverejournal.com

**7 COMMUNITIES** **More Than 100,000 Readers Each Week**

REAL ESTATE  
Sales • Rentals  
Land • Commercial  
**RECRUITMENT**  
Professional • Medical  
General • Services

• Auto Sales • Yard Sales  
• Miscellaneous

### HELP WANTED

EVERETT-Personal Care Assistant needed - Mornings 8am-2pm or evenings 3pm-7pm.  
Hablo Español. Call Susan 617-389-6190

are Monday by 4 p.m. Call 781-485-0588

LOOKING FOR Great Results? Call our classified department. Call 781-485-0588 or fax the ad to 781-485-1403

**EMERGENCY ALL BLOOD TYPES NEEDED.**

Give now. American Red Cross

Paralegals sought by Maw Law, PC in Chelsea, MA. Multiple F/T positions available. Responsibilities: Drafting forms and emails for attorney review. Corresponding with clients and collecting documents. Researching and summarizing cases for attorney. Organizing and maintaining documents in paper and electronic filing system. Must have bachelor's degree in legal or business-related field or its equivalent and be fluent in Spanish or Portuguese. Send resume to Mark White via email at mwhite@mawlaw.com.

### FOR LEASE

**CHELSEA Land on Chelsea Creek for Lease Water Dependent Industrial Uses Only Please Contact: Andy McLaughlin (312) 935-2800**



# CONGRATULATE YOUR GRADUATE

PUT YOUR SPECIAL GRADUATE'S PHOTOGRAPH WITH YOUR MESSAGE IN OUR GRADUATION ISSUE

Congratulations

Love Your Family & Friends

This Size With Picture **\$25.00**

Class of 2016

Ad Deadline is Monday, June 7

Write \_\_\_\_\_  
Your \_\_\_\_\_  
Message \_\_\_\_\_  
Here \_\_\_\_\_  
(Please put name on back of photo)  
Name \_\_\_\_\_  
Address \_\_\_\_\_  
City \_\_\_\_\_ Phone \_\_\_\_\_

Send your special photograph & message along with a check for \$25.00 to:

**THE CHELSEA RECORD**  
385 Broadway, Suite 105 Revere, MA 02151;  
781-485-0588  
or email to promo@reverejournal.com

# Chelsea's Professional Service Directory

<h3>ELECTRICIAN</h3> <p><b>MOONEY ELECTRIC LLC</b> Residential &amp; Commercial Fully Licensed &amp; Insured <b>KEVIN MOONEY</b> 781-799-1862</p>	<p><b>1 col. x 1 inch \$60.00 For 3 Months (\$5 Per Week)</b></p>	<h3>LANDSCAPING</h3> <p><b>Jim Costello LAWN CARE</b> 617-962-5621 Reasonable rates</p>	<h3>RAY'S LANDSCAPING GARDENING SERVICES</h3> <p>Mowing - Weeding Trimming: Bushes Shrubs Everywhere in Front &amp; Back Yard New Lawn, Patios, Concrete, Brick work Call RAY — 781-526-1181 Free Estimates!</p>
<h3>PLASTERING</h3> <p><b>AUGUSTA PLASTERING</b> Interior/Exterior • Blueboard • Plastering Jim 978-777-6611 Free Estimates 978-777-6611</p>	<h3>PAINTING</h3> <p><b>Nick D'Agostino Professional Painter</b> Cell: 617-270-3178 Fully Insured Free Estimates</p>	<p><b>JOHN J. RECCA PAINTING</b> Interior/Exterior Commercial/Residential Fully Insured Quality Work Reasonable Rates Free Estimates 781-241-2454</p>	<p>Spring Clean Ups <b>CLOVERS LAWN CARE</b> • New Lawns Installed • Trees and Branches • Mulch &amp; Hedges • Mowing &amp; Fertilizing • Junk Removal FREE ESTIMATES Call Kevin <b>617-884-2143</b> cloverslawnrcare@gmail.com</p> <p><b>1 col. x 1 inch \$60.00 For 3 Months (\$5 Per Week)</b></p> <p><b>1 col. x 1 inch \$60.00 For 3 Months (\$5 Per Week)</b></p>
<h3>POOLS</h3> <h2>GOSMO POOLS</h2> <p>• NEW LINERS • INSTALLATION • POOL OPENINGS</p> <p><b>CALL JOHN 781-589-0505</b></p>	<h3>PLUMBING</h3> <p><b>MASTER PLUMBER</b> LIC #10914 \$75/HR <b>EDWARD DILORENZO</b> NOT FIXED - NOT CHARGED <b>781-853-9108</b> ELEC. DRAIN CLEANING</p> <p><b>1 col. x 2 inches \$10/wk</b></p>	<h2>PATRIOT</h2> <p>Sewer &amp; Drain Plumbing Services, LLC</p> <p><b>24 HR. SERVICE</b></p> <p><b>CALL 781-656-4884</b></p>	
<h3>REAL ESTATE</h3> <p><b>Gina S Soldano REALTOR®</b> ABR®, AHWD, e-PRO®, GREEN, MRP®, PSA®, SFR®, SRES®, SRS® Broker/Associate (857) 272-4270 GinaSSoldano@gmail.com gsoldanorealtor.com</p>		<p><b>PLEASE RECYCLE THIS NEWSPAPER</b></p>	

### THE JORDAN BOYS AND GIRLS CLUB HOLDS ANNUAL 5K CHELSEA CHASE.

Last Saturday morning, friends, members and supporters of the Jordan Boys and Girls Club gathered at the Chelsea Station Restaurant parking lot to register and get ready for the start of the annual Chelsea Chase. This event is held as a fundraiser for the organization. The Jordan Boys and Girls Club offers many programs for local children to spend their time in a safe and educational environment.



Councillor Leo Robinson and Juliana Has-sell.



William and Ana Garcia register for the 5K run.



Lourdes Sanchez and Alissa Ortiz at the registration booth.



Members of the Chelsea Fire Department at the event and running in the event with Chelsea City Councillor Leo Robinson.



Volunteers from the club helped make the event a huge success.



Sophia, Giuseppe, and Antonio Carpentieri getting ready for the Chelsea Chase.



Laila Burgos, Sofia Lopez, Genesis Sanchez, and Moses Aguilera.



Susana Garcia gets her Chelsea Chase Tee Shirt from Kelly Lawler from the Chelsea Club.



Alex MaGee and the Jordan Boys and Girls Club dance group.



Runners begin on the 5-kilometer run.



Team Metro Credit Union at the starting line.

A good life, built by hand.

NBSS.EDU/PROGRAMS

NORTH BENNET SCHOOL

Jump start a career in the trades in as little as nine months.

## For Advertising Rates, Call 781-485-0588